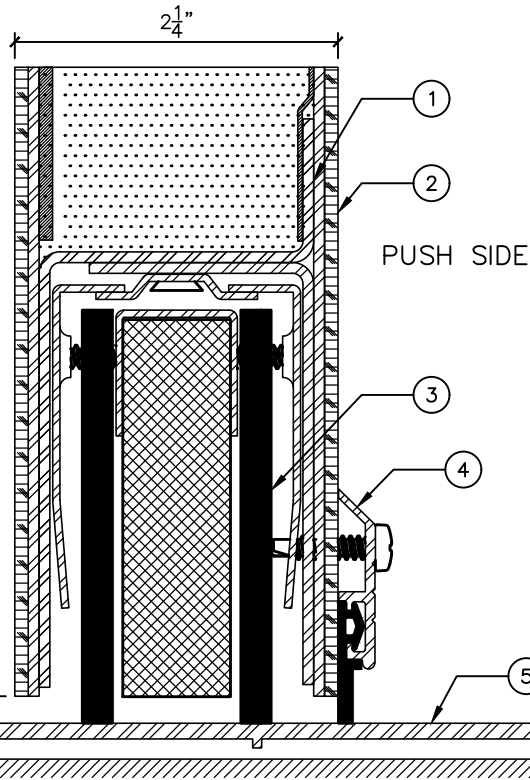


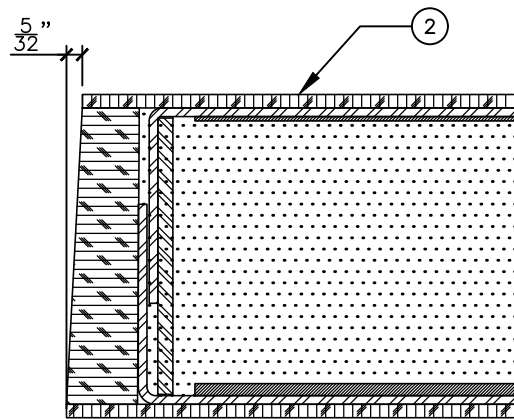
TOP DETAIL

3/4" = 1"-0"



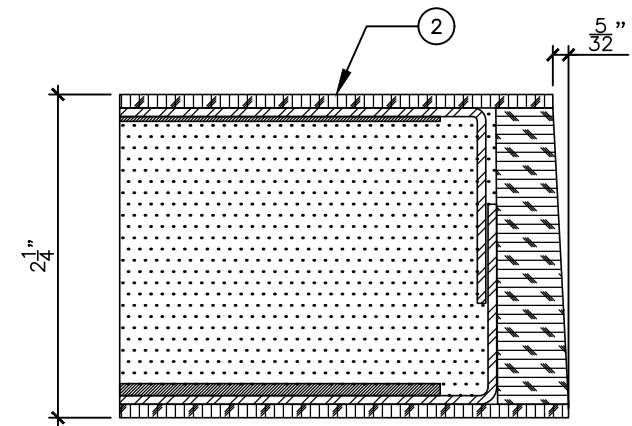
DOOR BOTTOM DETAIL

3/4" = 1"-0"



HINGE EDGE DETAIL

3/4" = 1"-0"



LATCH EDGE DETAIL

3/4" = 1"-0"

LEGEND:

- 1. ACOUSTIC STEEL CORE.
- 2. CLADDING / VENEER.
- 3. FULLY MORTISED ACOUSTIC DOOR BOTTOM SEAL.
- 4. SURFACE MOUNTED SWEEP SEAL – SHIPPED LOOSE.
- 5. 1/4" HIGH X 5" WIDE ACOUSTIC THRESHOLD INSTALLED AT TOP LEVEL OF FLOOR COVERING MATERIAL.

NOTES:

- ALL DOORS INCLUDE FACTORY PRE-MACHINING FOR HARDWARE.
- ALL DOORS INCLUDE FACTORY SEALING OF EDGES.
- FACTORY PRE-FINISHING IS OPTIONAL.
- CAM-LIFT HINGES REQUIRED.



DRAWING TITLE:

**WOOD CLAD ACOUSTIC DOOR - NON FIRE RATED
STC 53**

DATE: 2022-09-19

DRAWN BY: GV

REVISION: 1