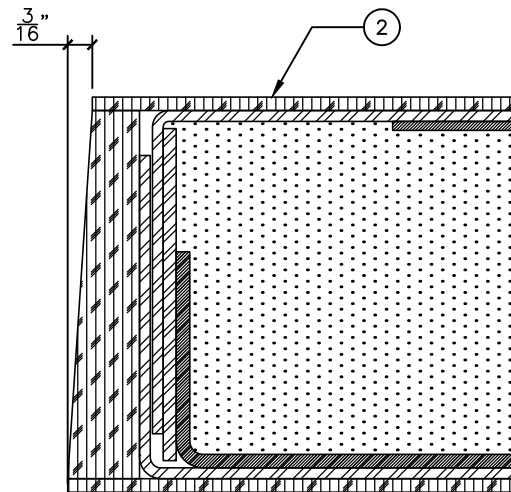


TOP DETAIL

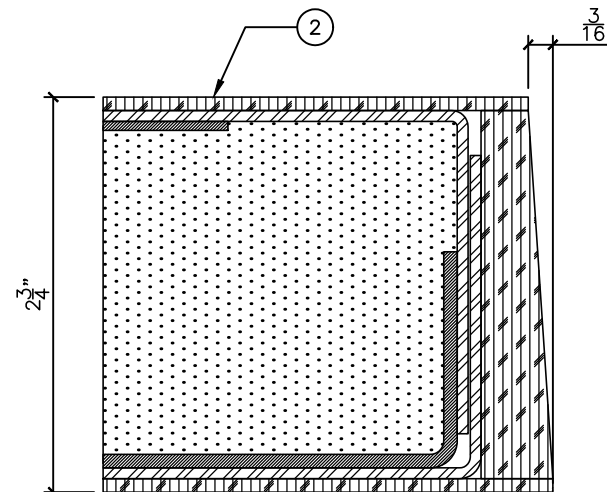
3/4" = 1"

2 3/4"



HINGE EDGE DETAIL

3/4" = 1"

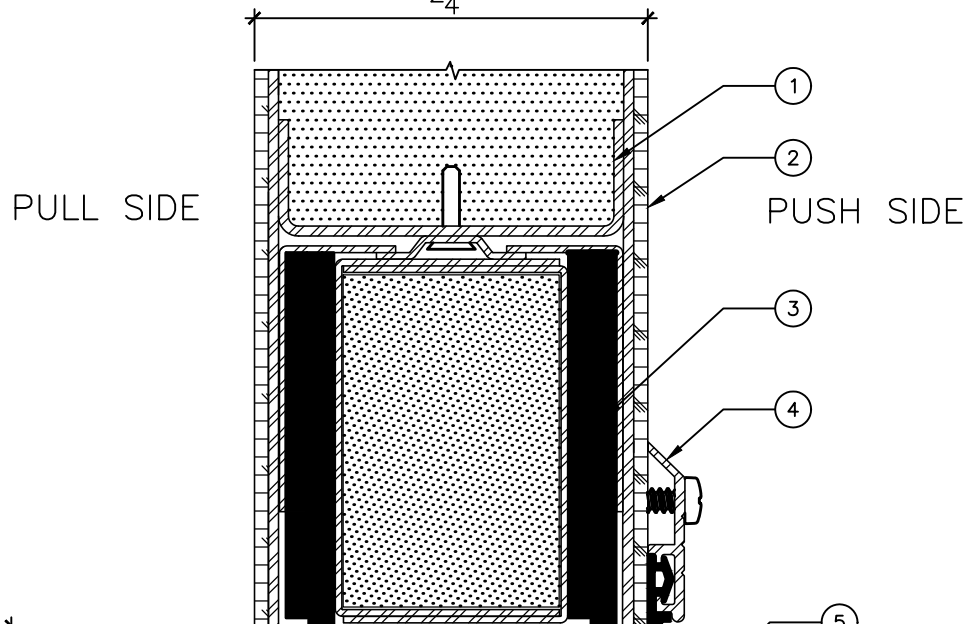


LATCH EDGE DETAIL

3/4" = 1"

LEGEND:

1. ACOUSTIC STEEL CORE.
2. CLADDING / VENEER AS INDICATED ON DOOR SCHEDULE.
3. FULLY MORTISED ACOUSTIC DOOR BOTTOM SEAL.
4. SURFACE MOUNTED SWEEP SEAL – SHIPPED LOOSE.
5. 1/4" HIGH X 5" WIDE ACOUSTIC THRESHOLD INSTALLED AT TOP LEVEL OF FLOOR COVERING MATERIAL.



DOOR BOTTOM DETAIL

3/4" = 1"

TOP OF FINISHED FLOOR COVERING MATERIAL

NOTE:

– CAM-LIFT HINGES REQUIRED.



DRAWING TITLE:

**WOOD CLAD ACOUSTIC DOOR - NON FIRE RATED
STC 54 TO 55 SINGLE AND STC 54 PAIR**

DATE: 2022-09-19

DRAWN BY: GV

REVISION: 4