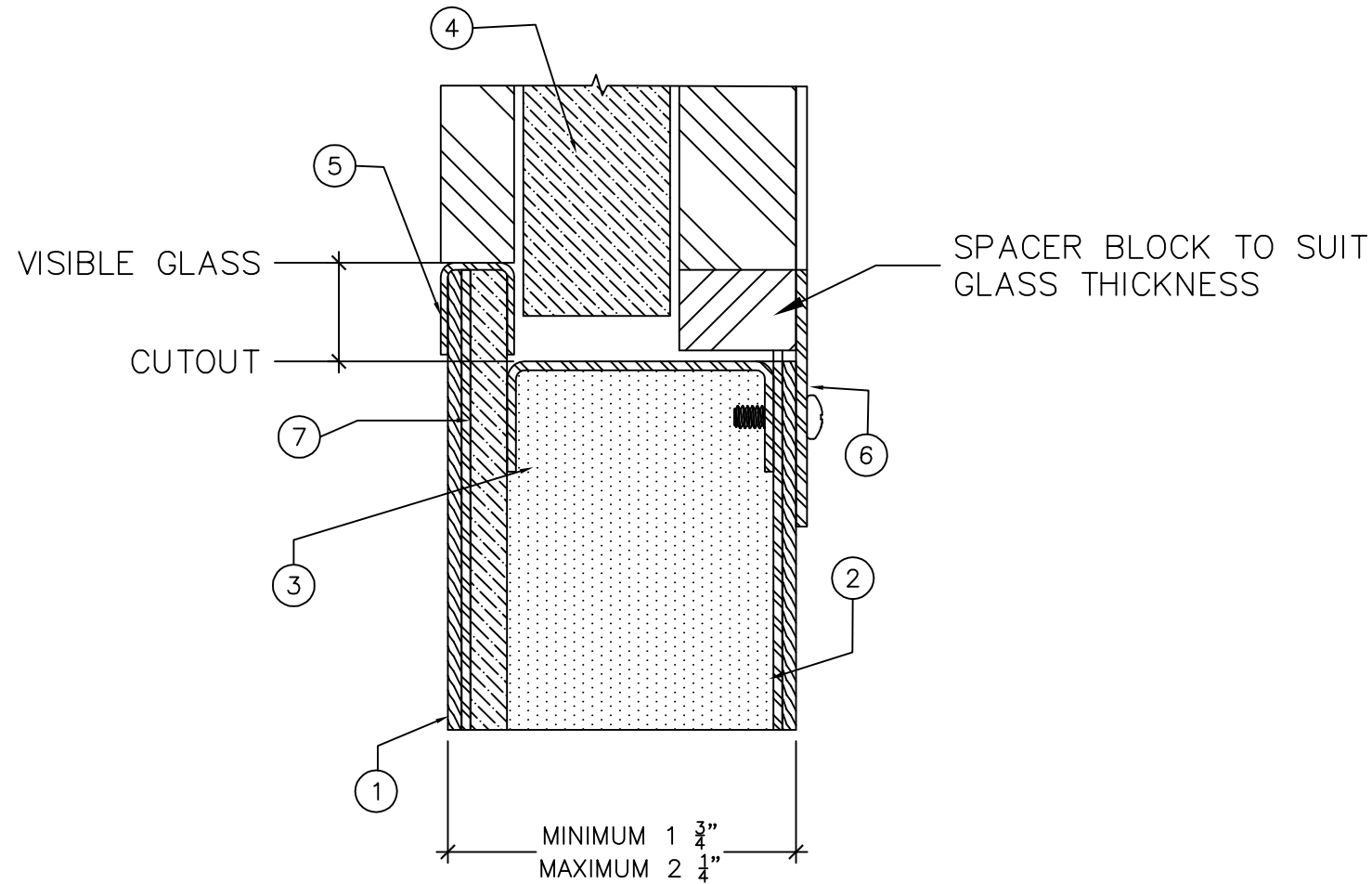


LEGEND:

1. WOOD VENEER.
2. INSULATED BULLET RESISTANT STEEL DOOR CORE
3. FIBERGLASS INSULATION.
4. GLASS TO UL752 LEVEL 1-8 UP TO 1 1/4" THICK.
5. FIXED GLAZING BEAD ON PUSH SIDE.
6. REMOVABLE GLAZING BEAD ON PULL SIDE.
7. STEEL BULLET PLATE TO UL752 LEVEL 1-8 AS REQUIRED.



ELEVATION
1" = 1'

DRAWING TITLE:

WOOD BULLET RESISTANT LITE KIT TO UL752 LEVEL 1-8



DATE:

DRAWN BY:

REVISION: