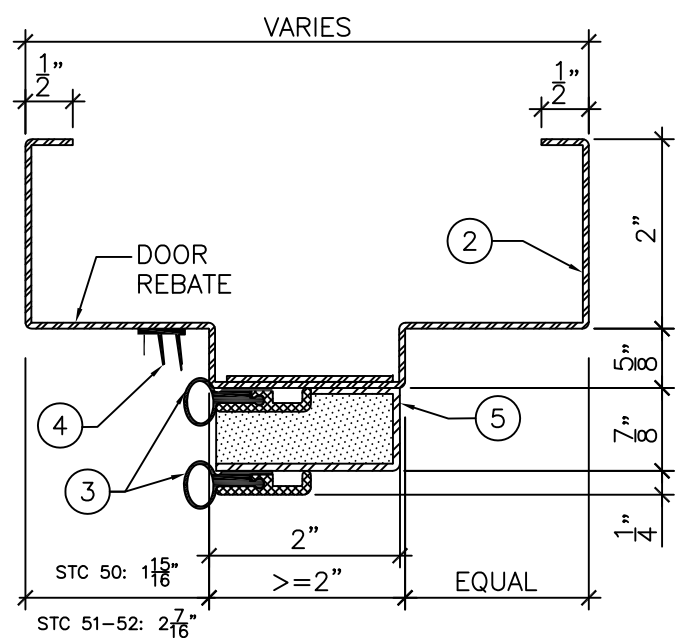
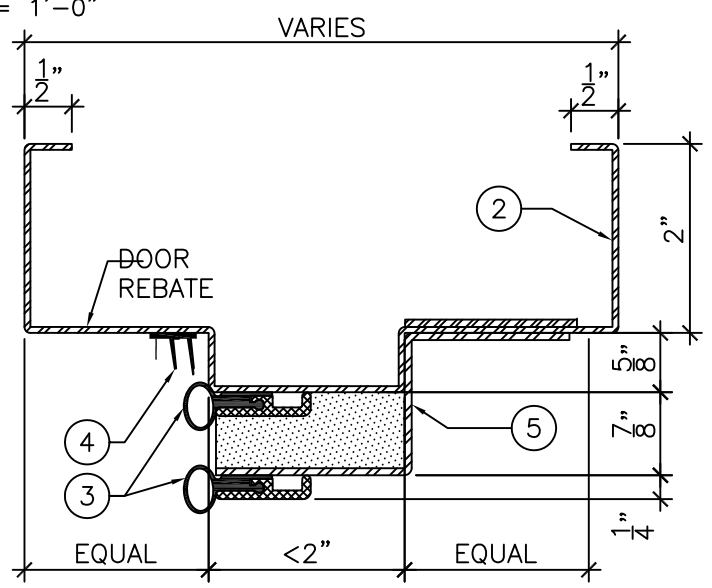


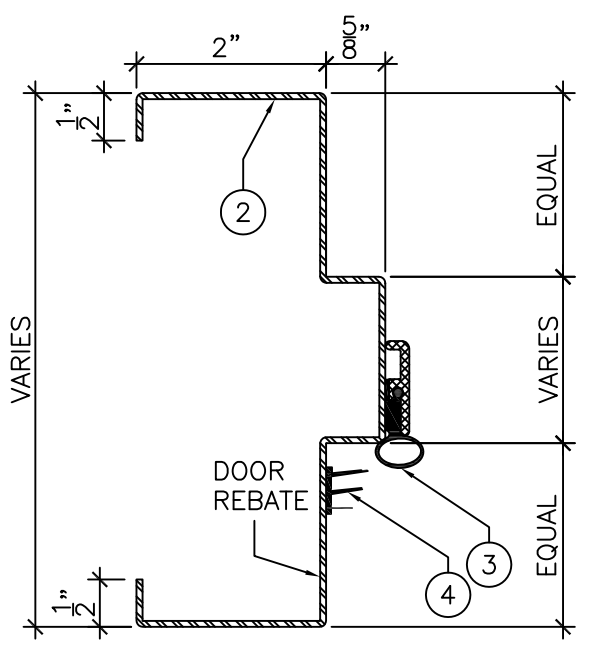
ELEVATION
3/4" = 1'-0"



DETAIL "A" - SOFFIT 2" OR MORE
6" = 1'-0"



DETAIL "A" - SOFFIT LESS THAN 2"
6" = 1'-0"



DETAIL "B"
6" = 1'-0"

- LEGEND:
- 1/4" HIGH ACOUSTIC THRESHOLD.
 - PRESSED STEEL ACOUSTIC FRAME INSTALLED AT TOP LEVEL OF FINISHED FLOOR COVERING MATERIAL. (DO NOT EMBED IN FLOOR FINISHING).
 - ACOUSTIC PERIMETER BULB SEAL TO BE FITTED AND FASTENED TO FRAME BY INSTALLER ON SITE. ACOUSTIC SEALS DIMINISH THE FRAME CLEAR OPENING SIZE AS FOLLOWS:
- REBATE WIDTH LESS 1 3/4" (45mm)
- REBATE HEIGHT LESS 1 3/4" (45mm).
 - ACOUSTIC PERIMETER FIN SEAL TO BE FITTED AND FASTENED TO FRAME BY INSTALLER ON SITE.
 - ACOUSTIC ABSORPTION CHAMBER.



DRAWING TITLE:
ACOUSTIC STEEL PAIRED FRAME AND PERIMETER SEALS FOR WOOD DOORS
STC 50 TO STC 52 - NON-FIRE RATED

DATE: 2020/07/27
DRAWN BY: ASC
REVISION: 3