

APPLICATIONS:

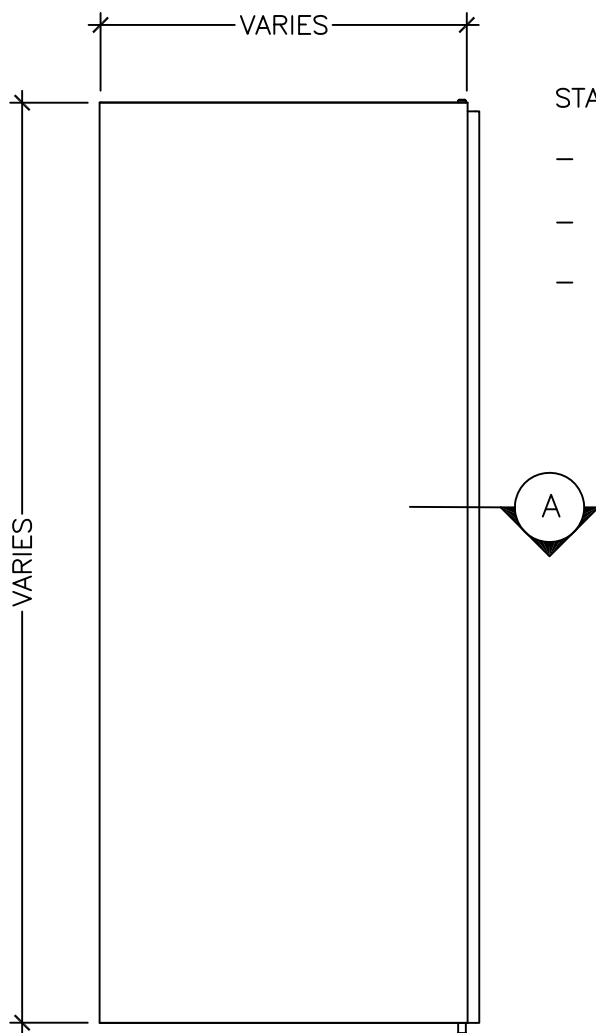
- PETROCHEMICAL
- LOW TO MEDIUM DOOR RESPONSE

STANDARDS AND ANALYSIS METHOD:

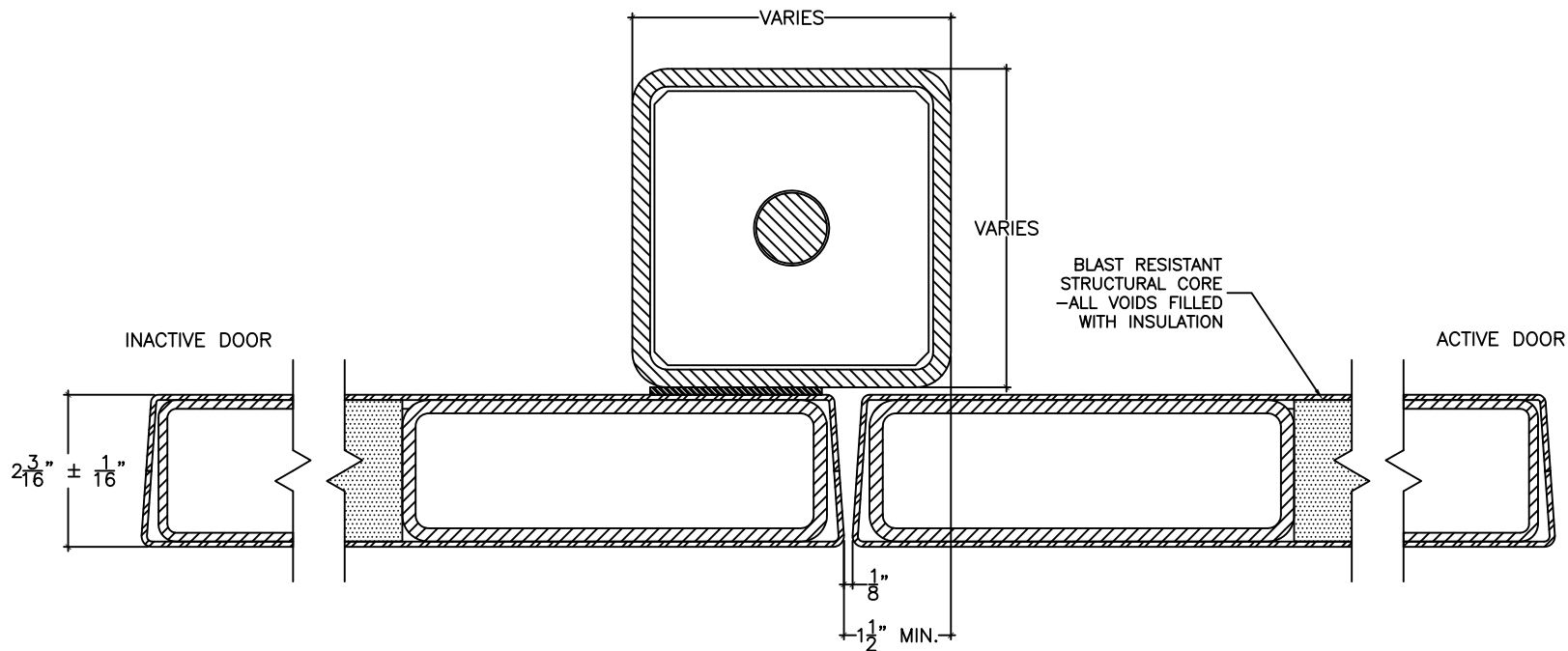
- ASTM F2927 STANDARD TEST METHOD FOR DOOR SYSTEMS SUBJECT TO AIRBLAST LOADINGS.
- ASCE'S DESIGN OF BLAST-RESISTANT BUILDINGS IN PETROCHEMICAL FACILITIES, 2010.
- ASTRAGAL DESIGN BASED ON AN ANALYTICAL METHODOLOGY.

NOTE:

- BLAST RESISTANCE IS A FUNCTION OF MULTIPLE VARIABLES. PLEASE CONSULT AMBICO FOR DETERMINATION OF A SUITABLE BLAST DOOR FOR YOUR APPLICATION.



ELEVATION
3/4" = 1'-0"



DETAIL "A"
SAME AT BOTTOM
4-1/2" = 1'-0"



DRAWING TITLE:

TYPICAL BLAST RESISTANT STEEL DOOR STRUCTURAL ASTRAGAL FOR PETROCHEMICAL AND INDUSTRIAL APPLICATIONS

DATE: 2021/02/03

DRAWN BY: ASC

REVISION: 1