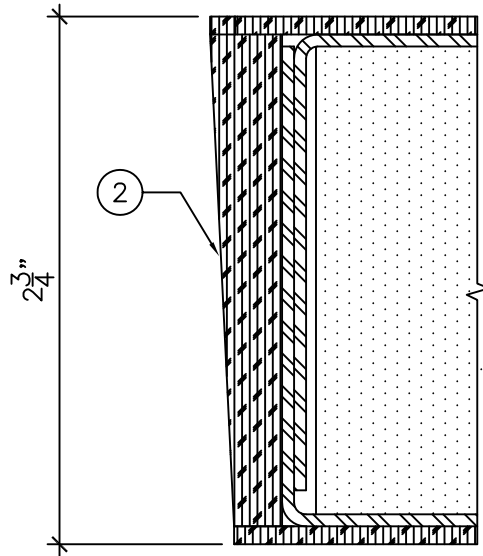
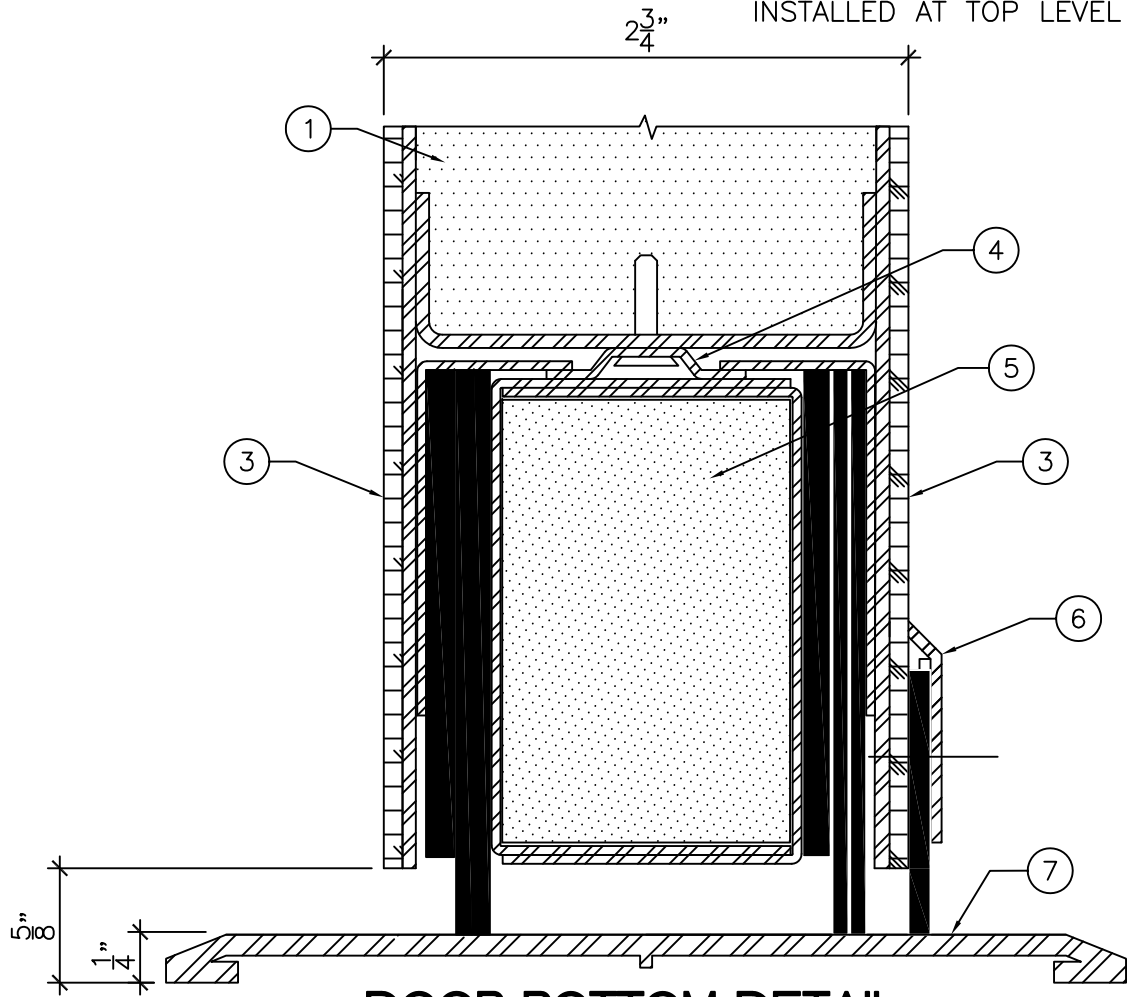


- LEGEND:
- 1. ACOUSTIC STEEL DOOR
 - 2. HARDWOOD RAIL & MATCHING HARDWOOD STILES.
 - 3. CLADDING / VENEER AS INDICATED ON DOOR SCHEDULE.
 - 4. STEEL CHANNEL.
 - 5. FULLY MORTISED ACOUSTIC DOOR BOTTOM SEAL.
 - 6. SURFACE MOUNTED SWEEP SEAL SHIPPED LOOSE.
 - 7. 1/4" HIGH X 5" WIDE ACOUSTIC THRESHOLD TO BE INSTALLED AT TOP LEVEL OF FLOOR COVERING MATERIAL.



EDGE DETAIL
1"-0" = 1'-0"



DOOR BOTTOM DETAIL
1"-0" = 1'-0"



DRAWING TITLE:
WOOD CLAD ACOUSTIC DOOR - NON FIRE RATED
STC 54 TO 55 SINGLE AND STC 54 PAIR

DATE:	2020/08/18
DRAWN BY:	ASC
REVISION:	3