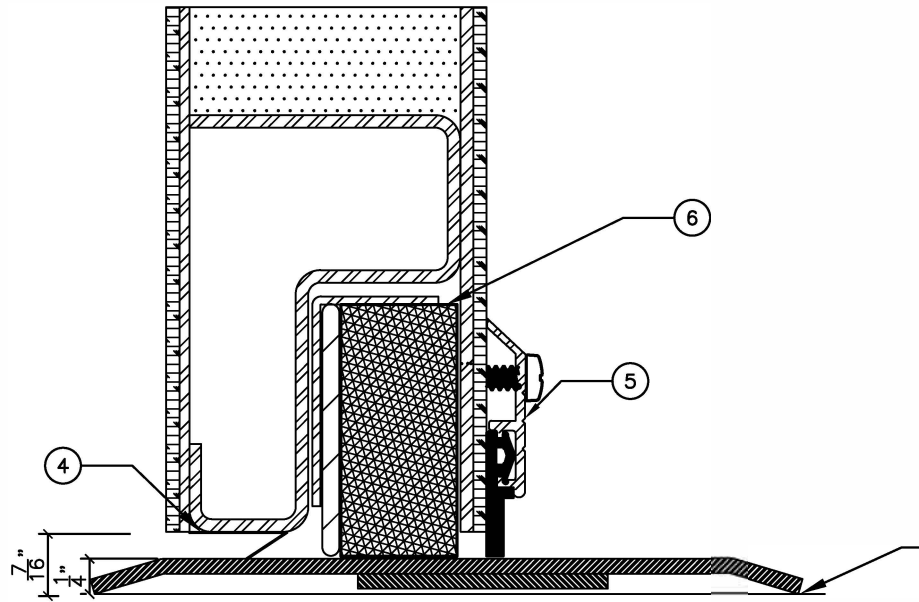


TOP SECTION

9" = 1'-0"

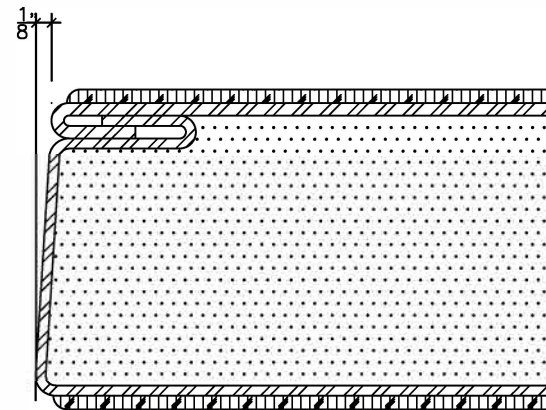


DOOR BOTTOM DETAIL

9" = 1'-0"

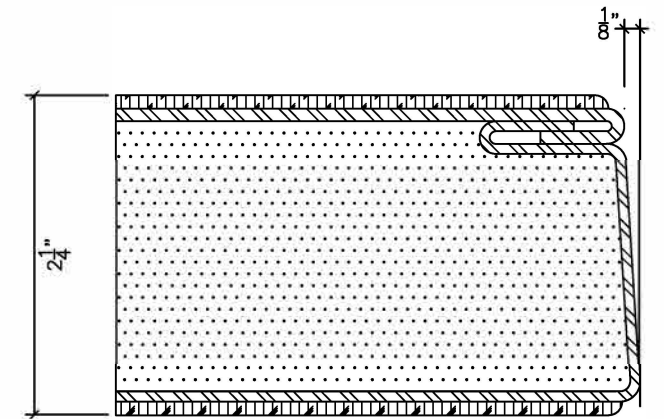
LEGEND:

1. STAINLESS STEEL DOORS WITH ACOUSTIC CORE.
2. CLADDING/VENEER AS INDICATED ON DOOR SCHEDULE.
3. 1/4" STAINLESS STEEL THRESHOLD SHIPPED LOOSE FOR INSTALLATION BY DOOR INSTALLER.
4. ACOUSTIC RF BRONZE SEAL TO BE FIT AND APPLIED BY INSTALLER ON SITE.
5. ACOUSTIC RF SWEEP SEAL TO BE FIT AND APPLIED BY INSTALLER ON SITE.
6. ACOUSTIC & RF DOOR BOTTOM SEAL TO BE FIT AND APPLIED BY INSTALLER AT SITE.



HINGE EDGE DETAIL

9" = 1'-0"



LATCH EDGE DETAIL

9" = 1'-0"