

## PRODUCTS OPTIONS:

### BORROWED LITE

### STAINLESS STEEL MATERIALS AND FINISHES<sup>1</sup>

#### MATERIALS

- o TYPE 304 STAINLESS
- o TYPE 316 STAINLESS

#### THICKNESSES

- o 12 GA.
- o 14 GA.
- o 16 GA.

### FINISHES

- o 2B, NOT PAINTED
- o #8 XL BUFF
- o #4
- o #8 SUPREME
- o #6
- o XL BLEND S
- o #7
- o XL SUEDE

### CORNER CONSTRUCTION

- o BUTT JOINT<sup>2</sup>
- o MITERED JOINT<sup>3</sup>

<sup>1</sup> MATERIALS AND FINISHES ARE TYPICAL. CONSULT AMBICO FOR ADDITIONAL OPTIONS.

<sup>2</sup> PLUG WELDED VIA PLATES.

<sup>3</sup> FULLY WELDED FOR STAINLESS STEELS WITH GRAINED FINISHES. MECHANICALLY FASTENED FOR ALL OTHER FINISHES.

### GENERAL NOTES

- ALL GRAINED FINISHES SHALL HAVE VERTICAL GRAIN IN JAMBS AND HORIZONTAL GRAIN IN HEADS AND SILLS. ALL FACE WELDS SHALL BE GROUND AND RE-GRAINED BUFFED TO A VISIBLE HAIRLINE AT MITER. INTERSECTING CONNECTIONS BETWEEN UNEQUAL FACE DIMENSIONS AND ALL POLISHED MIRROR FINISHES SHALL HAVE VISIBLE BUTT JOINT CONNECTIONS.
- WELDED FRAMES WITH ANY FACE GREATER THAN 2" MUST BE 14 GA OR THICKER.

**ISOMETRIC**  
3/4" = 1'-0"

DRAWING TITLE:

**STAINLESS STEEL BORROWED LITE SPECIFICATION SHEET 1 OF 2**

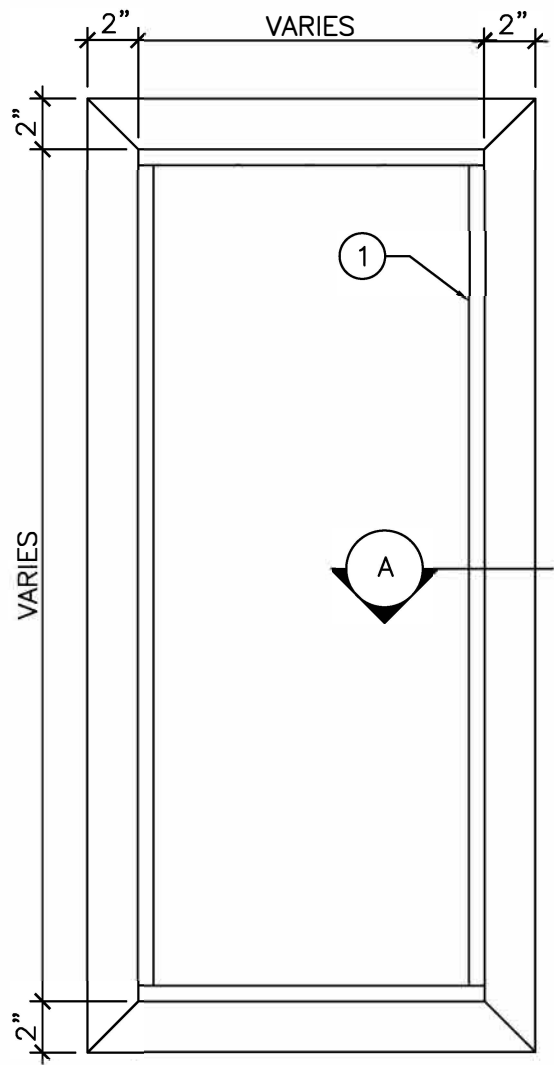
DATE:

DRAWN BY:

REVISION:

0

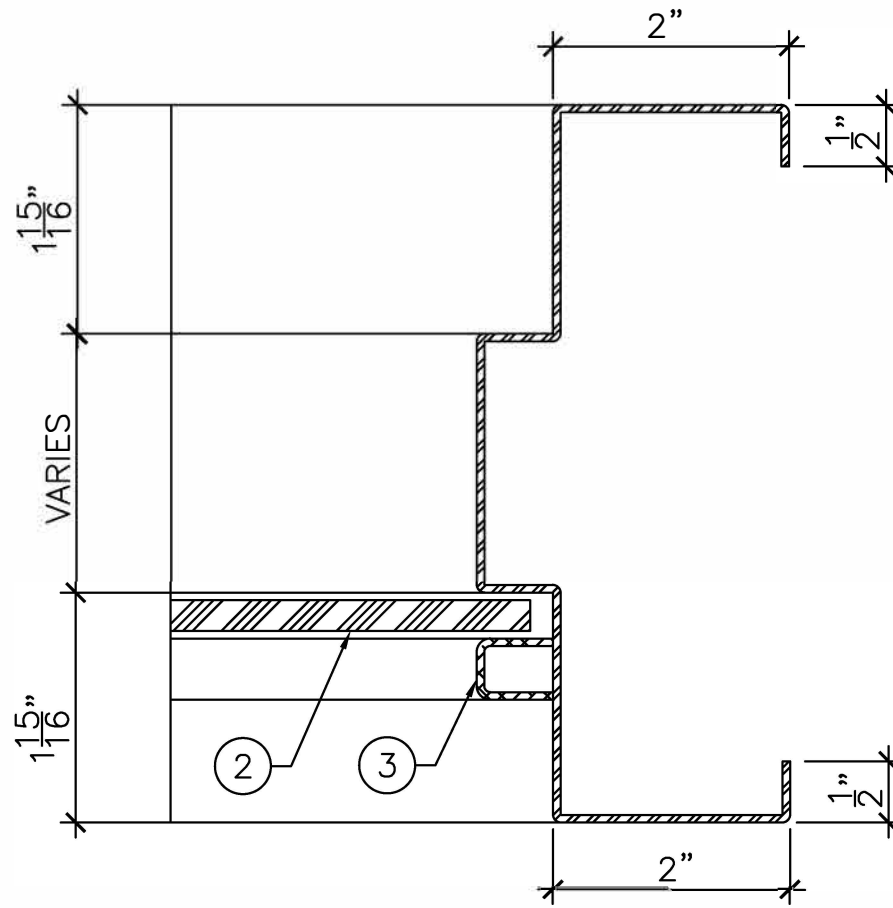




**ELEVATION**  
 $\frac{3}{4}'' = 1'-0''$

LEGEND:

- 1. STAINLESS STEEL FRAME.
- 2. GLASS BY OTHERS
- 3. REMOVABLE GLAZING BEADS.



**DETAIL "A"**  
 $1'-0'' = 1'-0''$



DRAWING TITLE:

STAINLESS STEEL BORROWED LITE SPECIFICATION SHEET 2 OF 2

DATE:

DRAWN BY:

REVISION:

0