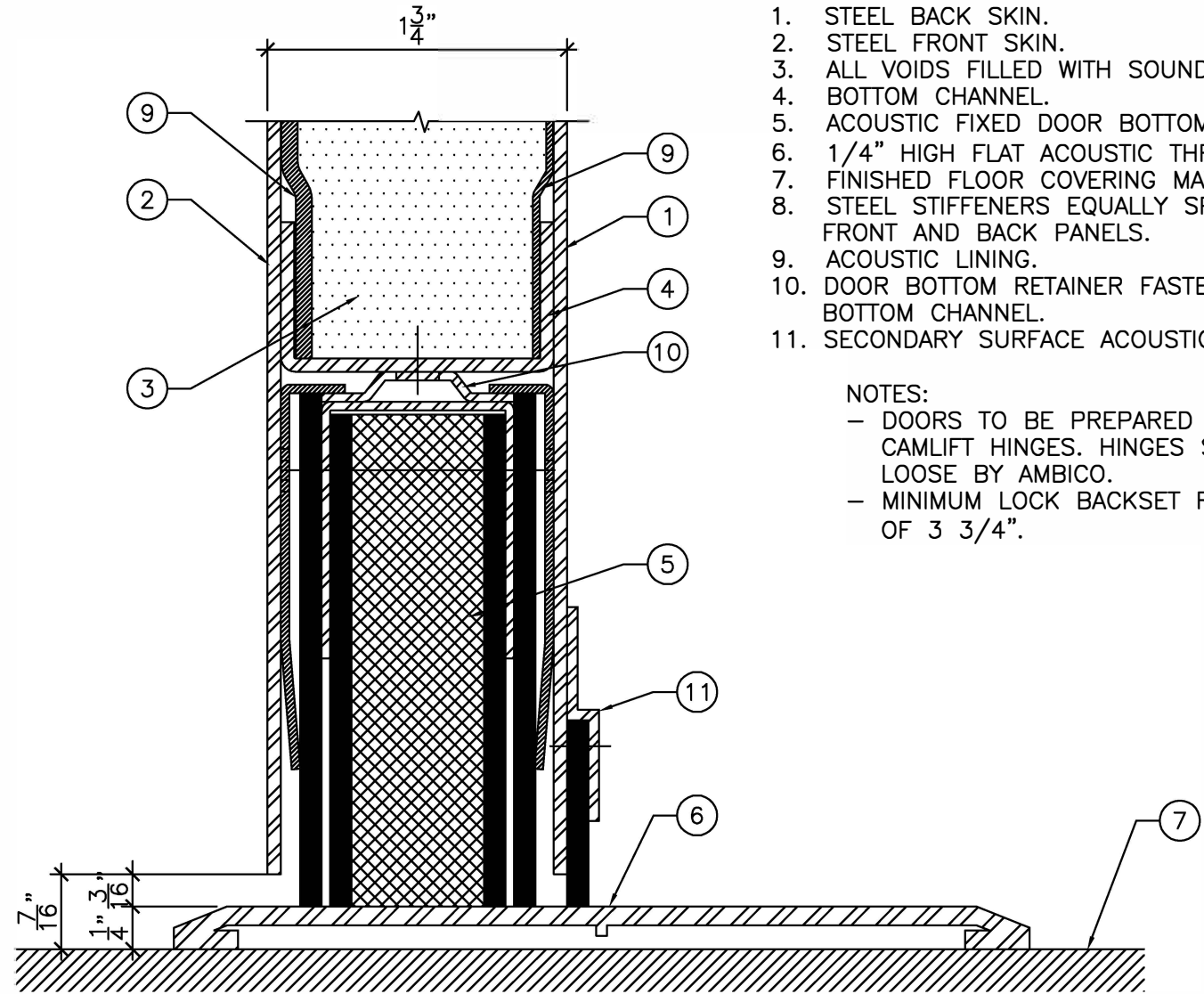


**ELEVATION**

3/4" = 1'-0"



**BOTTOM DETAIL "A"**

1"-0" = 1"-0"

**LEGEND:**

1. STEEL BACK SKIN.
2. STEEL FRONT SKIN.
3. ALL VOIDS FILLED WITH SOUND DEADENER.
4. BOTTOM CHANNEL.
5. ACOUSTIC FIXED DOOR BOTTOM.
6. 1/4" HIGH FLAT ACOUSTIC THRESHOLD.
7. FINISHED FLOOR COVERING MATERIAL.
8. STEEL STIFFENERS EQUALLY SPACED ON FRONT AND BACK PANELS.
9. ACOUSTIC LINING.
10. DOOR BOTTOM RETAINER FASTENED TO BOTTOM CHANNEL.
11. SECONDARY SURFACE ACOUSTIC SWEEP.

**NOTES:**

- DOORS TO BE PREPARED FOR CAMLIFT HINGES. HINGES SUPPLIED LOOSE BY AMBICO.
- MINIMUM LOCK BACKSET REQUIRED OF 3 3/4".



DRAWING TITLE:

**ACOUSTIC STEEL DOOR AND DOOR BOTTOM  
STC 53**

DATE:

DRAWN BY:

REVISION: