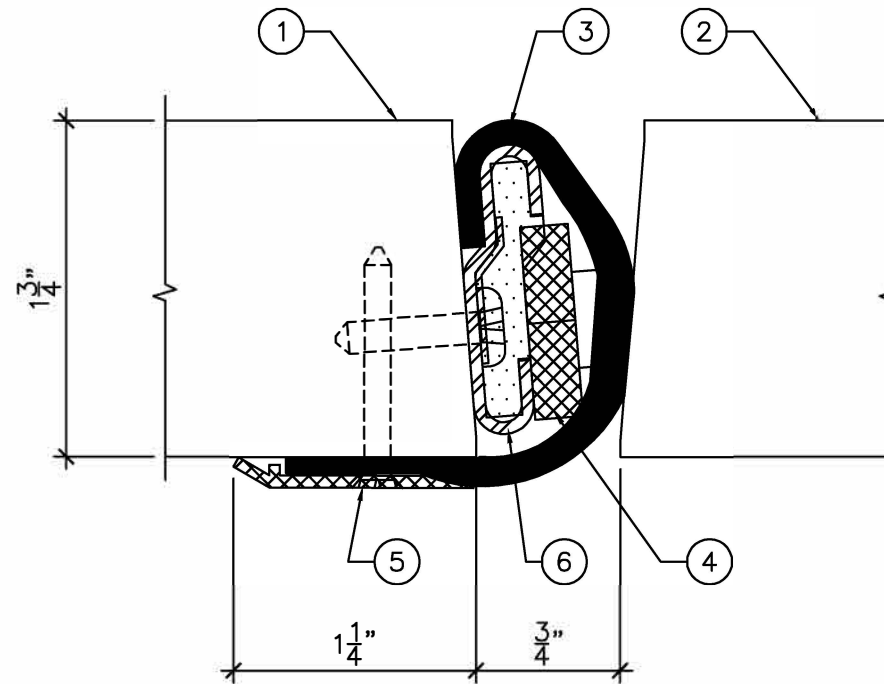


LEGEND:

1. "INACTIVE" ACOUSTIC DOOR.
2. "ACTIVE" ACOUSTIC DOOR.
3. ACOUSTIC MEETING STILE ASTRAGAL SEAL.
4. SOFT FOAM.
5. REMOVABLE SEAL RETAINER (ALUMINUM).
6. SEAL BRACKET (STEEL).



**ASTRAGAL SECTION**

1'-0" = 1'-0"



DRAWING TITLE:

**ASTRAGAL, 1.75" THICK DOOR, WOOD AND STEEL, BOTH DOORS ACTIVE**  
**STC 33 TO STC 50**

DATE:

DRAWN BY:

REVISION:

0